

# Built-in face shield (Type SD) instruction manual

Please read both this manual and the "Safety helmet Instruction Manual" to the end before use, and fully understand the contents before use. After reading, save it in a safe place and read it when necessary.

## For safe use

### ⚠ Warning (causes serious damage to life, face and eyes)

- Do not use for anything other than protecting your eyes and face from small flying objects such as dust and chemicals and short-circuit arcs.
- Do not use for shielding ultraviolet rays, infrared rays, and intense visible light. There is a risk of eye damage and blindness.
- Do not use items for which abnormalities are found during pre-work inspection.
- Do not use items that have received a large impact even once. The strength of the material may be reduced.
- Pull out the face shield correctly before use. Insufficient drawers will narrow the face shield and reduce protection against flying objects.
- Do not store the face shield while working. It cannot protect against flying objects.
- Do not modify or process. There is a risk of reduced strength and performance.

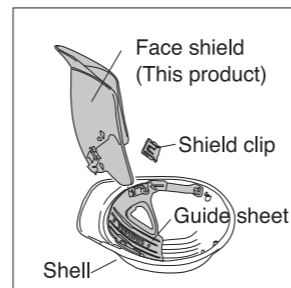
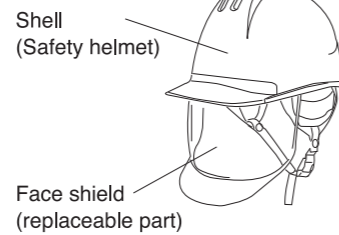
### ⚠ Caution (Affects function and performance and injures eyes and face)

- When pulling out or storing the face shield while wearing a safety helmet, check the safety against flying objects.
- When using in a dusty environment, remove the dust before storing the face shield. This is to prevent scratches on the face shield.
- If you handle chemicals that affect your eyes and cannot protect yourself from flying objects due to factors such as working posture and flying conditions, use safety goggles together.
- Avoid long-term use and long-term storage in hot places. Polycarbonate has high heat resistance, but its performance deteriorates due to discoloration, deterioration, and deformation over a long period of time.
- When replacing parts, use the parts specified by us. Performance cannot be maintained with incorrect parts or similar products.
- In a work environment where chemicals are used, replace it as soon as possible. Some chemicals may accelerate deterioration.

## Maintenance management

- Always clean**  
Dirt on the face shield can cause eye fatigue and damage to the face shield.
- Wipe off dust with a soft, clean cloth. Do not wipe with dirty gloves, towels, cloth, etc.
- Do not wash with thinner, alcohol, gasoline or other chemicals. This will reduce the performance of the face shield, shell, and shock absorbing liner.
- To maintain the anti-fog effect for a long time**  
Do not wash this product with running water, as the anti-fog effect will be reduced if you wash it with running water.
- To remove the attached dirt, soak a soft cloth with a solution of neutral detergent diluted with water, push off the dirty part, and absorb the water with a soft cloth to remove it.
- The face shield may become whitish depending on the storage conditions. This is due to the anti-fog agent on the face shield. Wipe it off with a soft cloth before use.
- If you receive an impact**  
Do not use a face shield (including shell) that has received a large impact.
- If the impact received is small, check carefully for scratches, cracks, chips, etc., and check the safety before use.
- When not using for a long time**  
Clean each part, store the face shield in the shell, and store it in a plastic bag together with the safety helmet.
- Do not store in places with high temperature, high humidity and direct sunlight.

## Function / use



- The face shield protects your eyes and face from flying objects, and is useful for work that generates splashes of flying dust, chemicals, etc., or work that may cause a short-circuit arc. However, it does not guarantee that damage to the eyes and face can be prevented against all flying objects.
- The material is polycarbonate and hard coat treatment is applied to improve scratch resistance. In addition, anti-fog processing is applied to prevent fogging.
- This face shield can change the angle. Please use it according to the work application, work environment, and work conditions (when using glasses, masks, etc.).

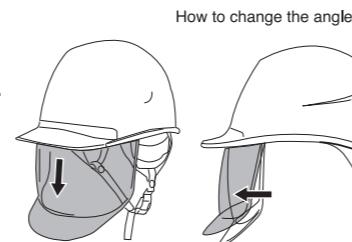
## Time for replacement

- It depends on your environment, frequency, and storage conditions. Replace after confirming the following conditions. Please order the parts to be replaced from our "same model".
- When the face shield has a lot of scratches, stains that cannot be removed, or it becomes difficult to see due to a decrease in transparency and decrease in anti-fog effect.
  - When the face shield has large scratches, cracks, chips, or deformation
  - When you receive a big impact even once.
  - When the face shield becomes white or dull.

## How to use the face shield

- The face shield is stored inside the shell.**  
Before putting on the helmet, pull out the face shield and perform the following inspections.
  - Are there any large scratches, beauty, chips, or deformation?
  - Is the transparency bad?
  - Is the face shield loose or misaligned?
 If something goes wrong, replace the face shield. (See "How to replace the face shield" on the back.)

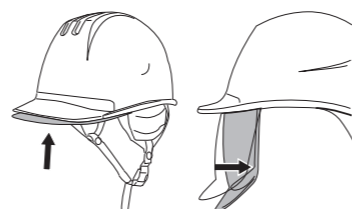
- Operation**  
When lowering the face shield. Place your finger on the tip of the brim of the face shield and lower it so that it is pulled inward. (If you grab the center and pull it out, it will work smoothly.)



When changing the angle of the face shield, push the face shield until it makes a clicking sound.

- When storing the face shield. While pulling it inward, push it in until it stops.

If you change the angle of the face shield, be sure to return it to the lower angle before storing it. If you forcibly store it without returning it to the lower angle, the face shield may be damaged.



# Built-in face shield (Type SD) instruction manual

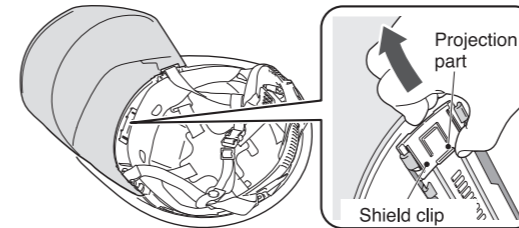
The exchange method of a SD face shield

## Cautions

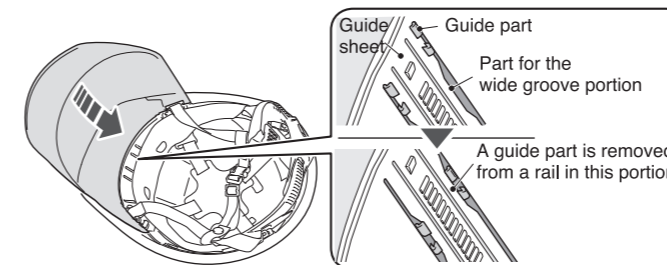
When you exchange a face shield, please take care not to injure your finger etc.

## □ Removal

- 1 Pulled out face shield.**  
Pull out until a shield stops.
- 2 Remove shield clip.**  
Please apply a finger to a projection part, push up in the direction of an arrow and remove. (When you are hard to remove a shield clip, please push up strongly.)



- 3 A face shield is removed from a guide sheet.**  
Please depress a face shield lightly and remove the guide part of a face shield from a part for the wide groove portion of a guide sheet.

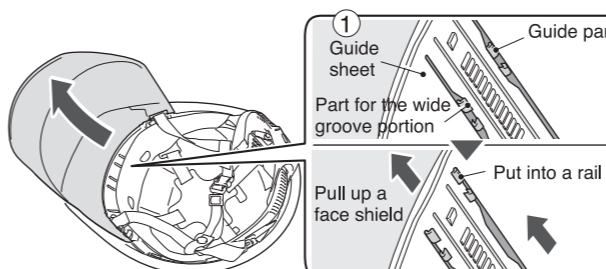


- 4 A face shield is removed from Shell.**  
Please draw out a face shield.



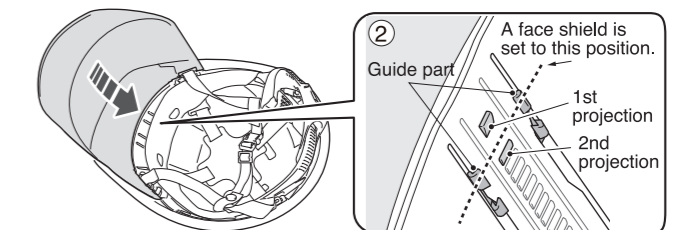
## □ How to attach

- 1 A face shield is inserted between a guide sheet and shell.**
- 2 A face shield is attached to a guide sheet.**  
Please unite the guide part of a face shield with the broad groove portion of a guide sheet, pull up a face shield, and put into a rail.

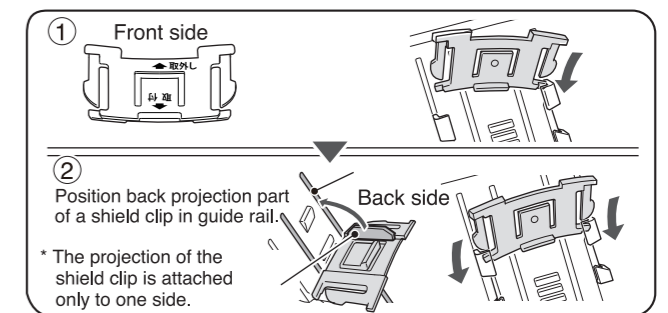


## □ How to attach (Continued)

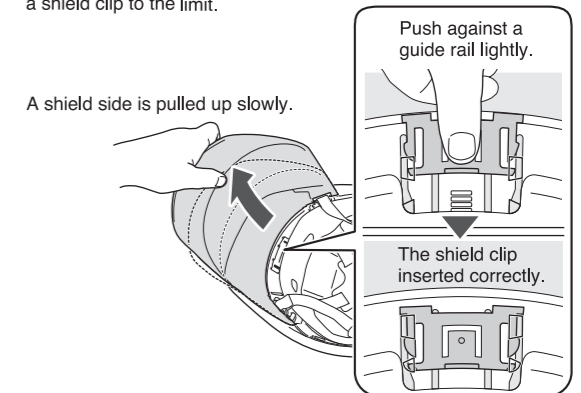
- 2 Please depress a face shield lightly and position the guide part of a face shield in the center of the 1st and 2nd projection.**



- 3 Attach Shield Clip.**  
Please check the attachment direction of shield clip and push the tip of a shield clip into one side of the guide part of a face shield.  
Please position the projection part on shield clip back side with the rail of a guide sheet, and push the tip of a shield clip into another side of the guide part of a face shield.



- 3 Pushing a shield clip against the guide rail side lightly with a finger, please pull out a face shield slowly to top of upward, and insert the tip of a shield clip to the limit.**



## 4 Check of Attachment

We should check whether all the parts are attached certainly and whether the guide sheet has separated from shell. (Please move each part 2-3 times, and check.)

\* Imperfect attachment and the incorrect attachment spoil the performance as Safety helmet.

