

Built-in face shield (Type SE) instruction manual



Please read both this manual and the "Safety helmet Instruction Manual" to the end before use, and fully understand the contents before use. After reading, save it in a safe place and read it when necessary.

For safe use

⚠ Warning (causes serious damage to life, face and eyes)

- Do not use for anything other than protecting your eyes and face from small flying objects such as dust and chemicals.
- Do not use for shielding ultraviolet rays, infrared rays, and intense visible light. There is a risk of eye damage and blindness.
- Do not use items for which abnormalities are found during pre-work inspection.
- Do not use items that have received a large impact even once. The strength of the material may be reduced.
- Pull out the face shield correctly before use. Insufficient drawers will narrow the face shield and reduce protection against flying objects.
- Do not store the face shield while working. It cannot protect against flying objects.
- Do not modify or process. There is a risk of reduced strength and performance.

⚠ Caution (Affects function and performance and injures eyes and face)

- When pulling out or storing the face shield while wearing a safety helmet, check the safety against flying objects.
- When using in a dusty environment, remove the dust before storing the face shield. This is to prevent scratches on the face shield.
- If you handle chemicals that affect your eyes and cannot protect yourself from flying objects due to factors such as working posture and flying conditions, use safety goggles together.
- Avoid long-term use and long-term storage in hot places. Polycarbonate has high heat resistance, but its performance deteriorates due to discoloration, deterioration, and deformation over a long period of time.
- When replacing parts, use the parts specified by us. Performance cannot be maintained with incorrect parts or similar products.
- Do not use in a work environment where organic solvents are used. There is a risk of reduced functionality.

Maintenance management

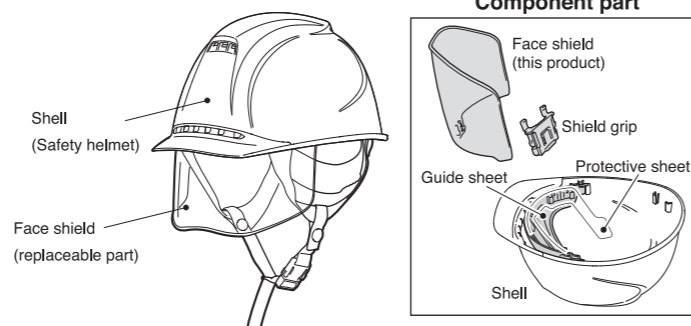
- Always clean
 - Dirt on the face shield can cause eye fatigue and damage to the face shield.
 - Wipe off dust with a soft, clean cloth. Do not wipe with dirty gloves, towels, cloth, etc.
 - Do not wash with thinner, alcohol, gasoline or other chemicals. This will reduce the performance of the face shield, shell, and shock absorbing liner.
- If you receive a impact
 - Do not use a face shield (including shell) that has received a large impact.
 - If the impact received is small, check carefully for scratches, cracks, chips, etc., and check the safety before use.
- When not using for a long time
 - Clean each part, store the face shield in the shell, and store it in a plastic bag together with the safety helmet.
 - Do not store in places with high temperature, high humidity and direct sunlight.

Time for replacement

It depends on your environment, frequency, and storage conditions. Replace after confirming the following conditions. Please order the parts to be replaced from our "same model".

- When the face shield has a lot of scratches, stains that cannot be removed, or it becomes difficult to see due to a decrease in transparency.
- When the face shield has large scratches, cracks, chips, or deformation
- When you receive a big impact even once.

Function / use



How to use the face shield

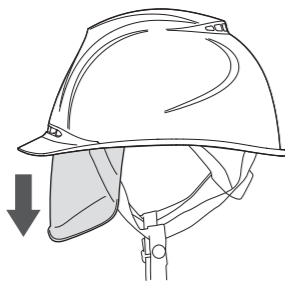
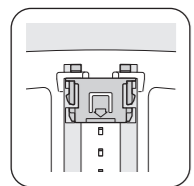
■ The face shield is stored inside the shell. Before putting on the helmet, pull out the face shield and perform the following inspections.

- Are there any large scratches, beauty, chips, or deformation? • Is the transparency bad? • Is the face shield loose or misaligned?

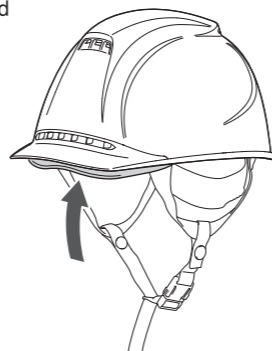
If something goes wrong, replace the face shield. (See "How to replace the face shield" on the back.)

- Operation
 - When lowering the face shield. Please take it down to the end. (If you grab the center and pull it out, it will work smoothly)

Position of shield grip



- When storing the face shield
 - Push it all the way in.



Note

- When using the face shield
- Pull it out "completely" before starting work.
 - "Incomplete drawer" of the face shield is dangerous because the defense performance against flying objects is reduced.

- When not using the face shield
- Store inside the shell to protect the face shield.
 - It is dangerous to store the face shield in the shell while working because it cannot protect against flying objects. Please store the face shield after finishing the work.

Built-in face shield (Type SE) instruction manual



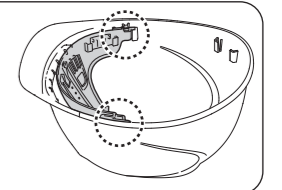
How to replace the face shield

Caution

When replacing the face shield, be careful not to hurt your fingers.

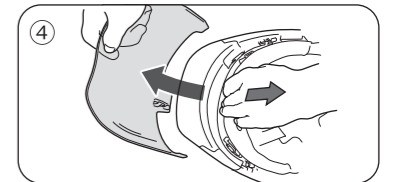
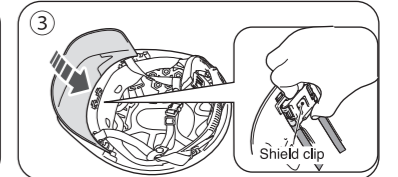
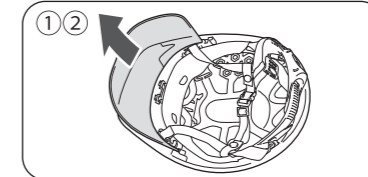
⚠ Warning

- Do not disassemble the mounting part of the guide sheet.



How to remove the face shield

- ① **Pull out the face shield.**
Pull it out to the position where it stops completely.
- ② **Fix the shield grip.**
Hold the shield grip with your fingers so that it does not move.
- ③ **Remove the shield clip from the face shield.**
While still in the state of ②, lightly push up the face shield and remove the shield grip from the face shield.
- ④ **Remove the face shield from the shell.**
Pull out the face shield. Be careful not to lose the shield clip.

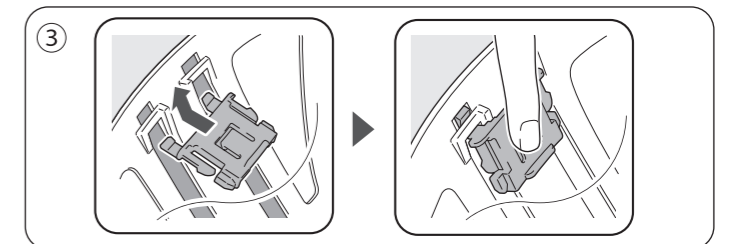
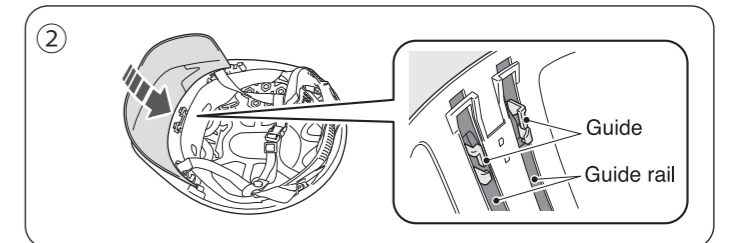
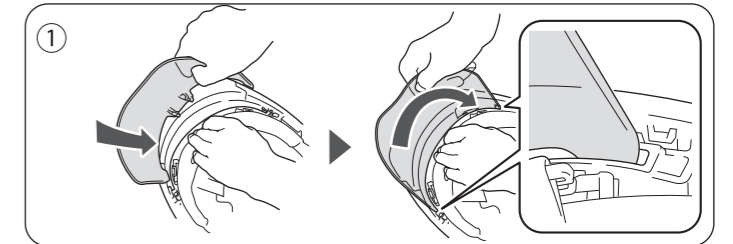


How to attach the face shield

- ① **Insert the face shield between the guide sheet and the shell.**
Insert the face shield between the shell and the guide sheet so that it slides in.
- ② **Align the face shield with the guide.**
Lightly push up the face shield and align the guide part of the face shield with the guide rail.
- ③ **Attach the shield clip to the guide rail.**
(1) Check the orientation, insert the shield clip into the guide rail while removing the protective sheet, and press it with your finger.

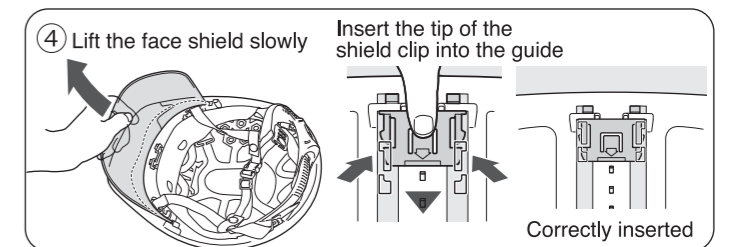
Note: The protective sheet is part of the function. Please do not remove it.

(2) While lightly pressing the shield clip upward with your finger, align the guide part of the face shield with the guide rail, slowly pull out the face shield all the way up, and insert the shield clip all the way.



- ④ **Check the installation status.**
Check that all parts are securely attached and that the guide sheet is not detached from the shell. (Move each part 2-3 times to check)

Note: Incomplete installation or incorrect installation impairs the performance of the Safety helmet.



Produce & manufacturing : **Tanizawa Seisakusho, Ltd.**
No.8-1, Shintomi-2, Chuo-ku, Tokyo 104-0041 JAPAN
Tel. : 03-3552-5581 Fax : 03-3552-5576