

Type J suspension instruction manual



Please read both this manual and the "Safety helmet Instruction Manual" to the end before use, and fully understand the contents before use. After reading, save it in a safe place and read it when necessary.

This product is a Type J suspension that uses a shock absorbing structure "block liner" for protection in the events of tumbling and falling down. Styrofoam shock absorbing liner is not inserted, but it can be used as a safety helmet for protection in the events of tumbling and falling down.

For safe use

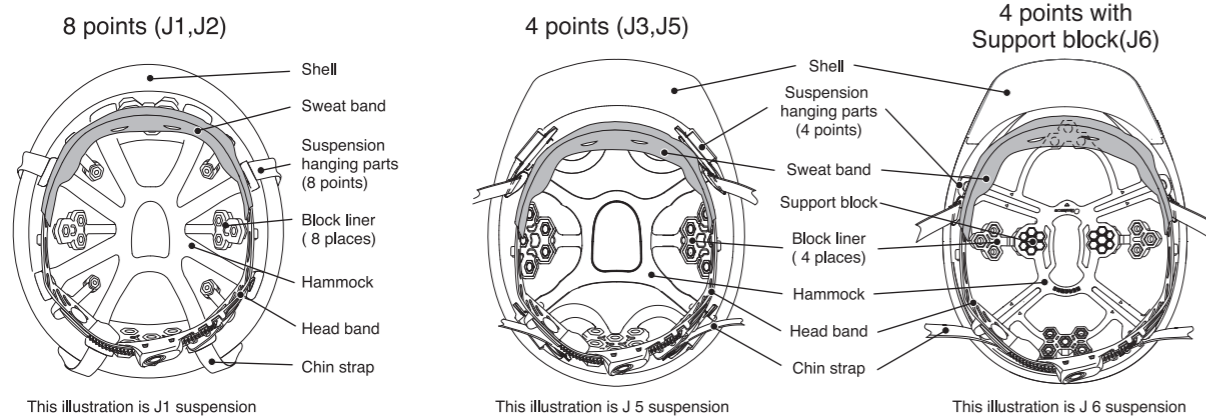
Warning (Ignoring this and mishandling it can cause serious damage to your life or head.)

- Do not use damaged / deformed / deteriorated items or processed / modified items. Safety performance is reduced.
- Before use, check if the block liner is in the position shown in the figure below.
- If the left and right block liners slip under the hammock, return them to their original positions.
- When removing the 8-points Type J suspension, do not pull on the hammock without pressing the release button. The suspension may be damaged.

Caution (If you ignore this and handle it incorrectly, you may injure your head.)

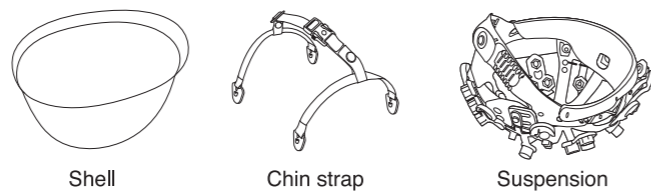
- Use shell, suspension, and chin strap in a suitable combination.
- The wrong combination cannot demonstrate safety performance. In addition, the wrong combination is not covered by the product warranty.
- Make sure to attach and remove parts one by one. This is to ensure safety. Also, applying excessive force will damage the product.
- Check that the suspension hanging parts are firmly fitted all the way in and do not easily come off the shell.
- For 8-points Type J suspension, check that the release button is locked.
- When replacing the suspension, be careful not to hurt your fingers.
- Normally, replace the suspension in about a year. Also, if you receive a big impact even once, replace the entire helmet.

Name of each parts



Component part

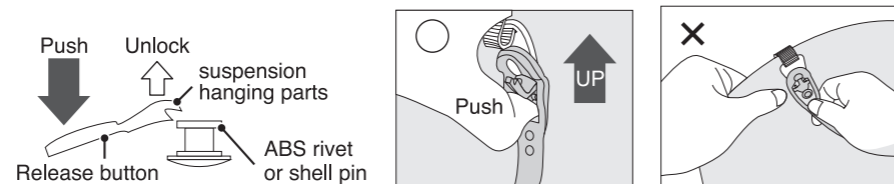
When replacing, check that the proper parts are securely installed.



How to remove the suspension

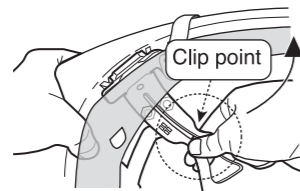
For 8-point Type J suspension

- Press the release button on the suspension hanging parts to unlock and slide it towards the edge of the shell.
- In case of FRP shell, please be careful not to lose the ABS rivet.
- When removing the 8-points Type J suspension, do not pull on the hammock without pressing the release button. The suspension may be damaged.



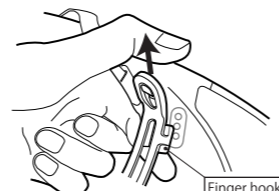
For 4-point Type J suspension

Grip the clip point (the constricted part of the hammock) with a jar and pull it up to remove the suspension from the shell.



For 4-point Type J suspension with support block

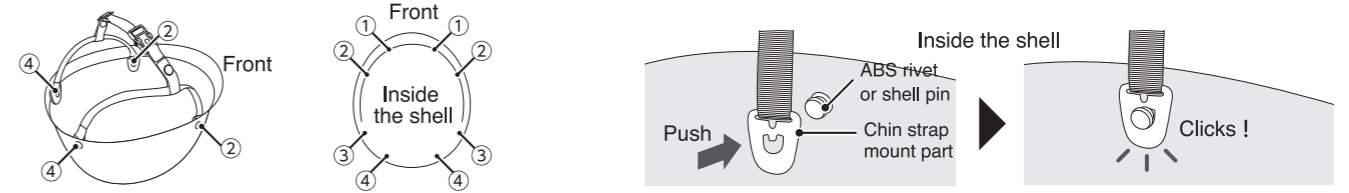
It can remove the suspension by pointing the protrusion on the back surface of the Suspension hanging parts that are part of the hammock with your finger and lifting it up by sliding it up.



How to attach the chin strap

For 8-point Type J suspension

- The shell has 8 ABS rivets or pins, which are mounted in ② and ④ positions on both sides.
- Insert the ABS rivet through the shell or the pin coming out of the shell into the U-shaped hole of the chin strap mount part from the inside of the shell, and press it until it clicks.



For 4-point Type J suspension and 4-point Type J suspension with support block

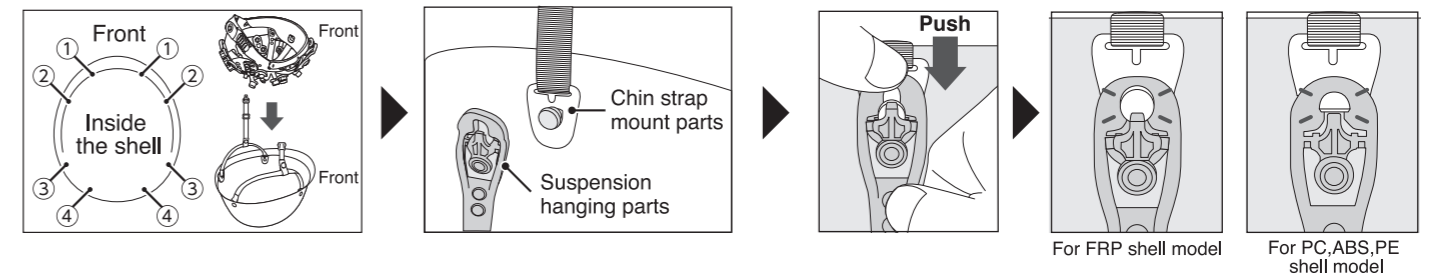
Insert the pin-type chin strap mount parts into the holes where the suspension hanging parts are set.



How to attach the suspension

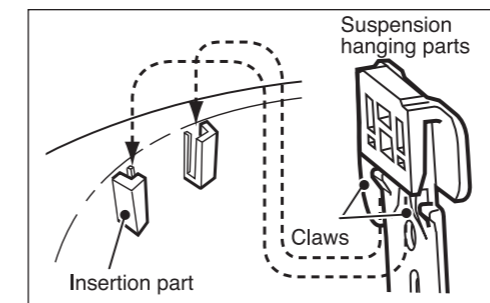
For 8-point Type J suspension

- For ② and ④, attach Suspension hanging parts on the chin strap mount parts on both sides.
- Align the front and back of the shell with the suspension, and then align the pins of the shell with the suspension hanging parts.
- While holding your hand on the hammock, use your other hand to push in the upper ends of the eight suspension hanging parts.



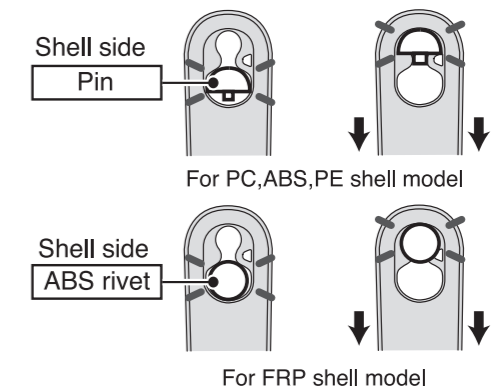
For 4-point Type J suspension

- Insert the suspension hanging parts so that they are hooked on the insertion part of the shell, and slide it until the claws of the hanging parts get over the bottom of the insertion part. Insert until you hear a "click".



For 4-point Type J suspension with support block

- Insert suspension hanging parts into the pins of the shell and slide it down. Insert until you hear a "click".



Produce & manufacturing : **Tanizawa Seisakusho, Ltd.**
No.8-1,Shintomi-2, Chuo-ku,Tokyo 104-0041JAPAN
Tel. : 03-3552-5581 Fax : 03-3552-5576